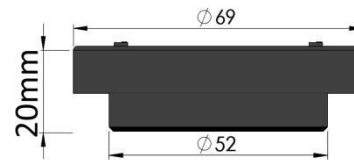


## Aero Graph

Thank you for your order!  
 The customer satisfaction at Aero Graph is our biggest priority. If you have any questions, suggestions or issues do not hesitate to contact us at [techsupport@aeromomentum.com](mailto:techsupport@aeromomentum.com)



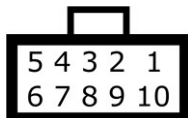
### WARNING

Do not use longer screws than provided in the two rear mounting holes. Using too long screws can touch the circuit board inside and damage the gauge.

Opening the gauge will void the warranty.

### Wiring

Always disconnect the vehicle battery when installing the gauge. Do not leave any wires not isolated. Always solder or crimp the wires and protect with heat shrink. Refer to the user manual to connect the sensors.



View when looking at the gauge.

Pin	Color	Function
1	Red	12v ( + ). Always install the gauge on a fused supply (3A)
2	Black	Vehicle Ground ( - )
3	White	0-5v analog input 1
4	Yellow	0-5v analog input 2
5	Brown	CAN bus H
6	Purple	CAN bus L
7	Orange	0-5v analog input 3
8	Gray	Digital input
9	Blue	5v output
10	Green	Digital output. Connected to the ground when output is enabled.

**Megasquirt 2 and 3 users: always double-check that you can bus wires are routed to SPR1 and SPR2 (to JS6 CANH and JS8 CANL inside the ECU). Refer to the MS3 hardware manual section 3.4.12 for more information.**

ONE YEAR NON-TRANSFERRABLE LIMITED WARRANTY